

CONTENTS:

President's Column <i>Bruce Campbell</i>	1
June's Main Event—Rich Schmid <i>Kerry Deane-Cloutier</i>	2
Andi Wolfe Seminar <i>Anne Rostvig</i>	3
Tips, Tricks and Problems <i>Kerry Deane-Cloutier</i>	3
Russ Fairfield Demo <i>Anne Rostvig</i>	4
Conover Steady & All Day Demos <i>Bruce Campbell</i>	5
Marilyn Campbell Demo and Classes <i>Art Liestman</i>	6
Instant Gallery	7
President's Challenge	8
Classifieds & Notices	10

NEXT MEETING

September 28, 2005

Sapperton Pensioners' Hall
 318 Keary St., New Westminster.
 Meeting starts at 6.30

Membership Sign up Month:

Bring your cheque books!

Main Event:

Ross Pilgrim—Rings & Things, An Overview of Segmented Turning

September Food Providers:

David Rudyk, Len Sawyer, Ray Schifferns, Rich Schmid, Doug Schop, Russ Selwood

October Food Providers:

Alan Spencer, Larry Stevenson, Harry Taylor, Robert Turrell, Dave Urquhart, Lucinda Van Valkenburg

PRESIDENT'S COLUMN:

Bruce Campbell

Welcome back! I am really looking forward to our 2005-6 season but lets review what happened over the summer. Thanks to Larry for organizing the summer Shop Crawl and thanks to all of you that took the time to clean your shops so others could visit. The Sapperton Hall has had a big facelift this summer. Every wall and ceiling has been painted and the elevator is finally finished. But more importantly, and thanks to the hard work of a group of Guild members, the storage room has new shelves so that all our equipment is once again stored at the Hall. Yaaaa! And last, but certainly not least, we have already held our first Guest Demonstration of the year. Russ Fairfield entertained about 25 of us with stories, techniques, tricks, and tips from his extensive experience in wood turning. The next day he led a class where they practiced many of the things he demonstrated on Saturday.

All in all, it was a great summer.

Now, looking forward: our speaker coordinators are hard at work organizing the 2005-6 speakers based on the theme of Tree To Bowl starting in November. But we will start the year with an Overview of Segmented Turning from our own Ross Pilgrim who is rapidly developing a well-earned reputation as a segmented turner. In October the Guild, along with major sponsors Laguna and Specialty Craftwoods, are hosting the West Coast Woodturning Competition at the Cloverdale Wood Show. Jay Mapson is the 2005 Competi-

(Continued on page 2)



Shop Crawl 2005—Scalp Painting 101

June's Main Event: Rich Schmid on Natural Edge Vases

Kerry Deane-Cloutier

Rich showed us how to turn natural edge vases and megaphones. He demonstrated a fine ability to make design changes on the fly when heckled (by Marco). He finished with a paid endorsement on the smoothness of finishing cuts possible when using a Stewart Batty style shear cut. In between, he gave a practical demonstration, with the following steps:

1. Choose a log that is the same length as the diameter – it is most interesting to choose a log that has the pith off center.
2. Draw a line thru the center of the end of the log at one end.
3. Take a square and draw 2 perpendicular lines from the line on the end of the log.
4. Make a line half way up on the perpendicular line.
5. Drill a 1" wide hole on these marks, deep enough to get thru the bark.
6. Mount the log with one hole in the spur center and one in the live center.
7. Rough out the log at the tail stock end and make a foot.
8. Shape the vase – be careful at the head stock end. Leave enough room on the bottom to finish it at the end (see megaphone comment above).
9. Once shape is determined make a finishing cut, sand if desired.
10. Mount piece in chuck.
11. Drill a hole in the middle of the piece.
12. Hollow out the vase.
13. Make a finish cut on the inside.
14. HAVE FUN.

PRESIDENT'S COLUMN:

Bruce Campbell

(Continued from page 1)

tion Coordinator and he will soon be asking for volunteers to help run the show and Guild booth. Please do all you can to support the event. In November we are very fortunate to have Marilyn Campbell as our Guest Demonstrator. Marilyn is world-renowned for her very creative and innovative turnings. You can see examples of her amazing work at <http://www.marilyncampbell.ca>

This month is signup month so there will not be any formal pre-meeting demonstrations but there will likely be a few "open" lathes where folks can make some chips together. Please bring your chequebooks. And finally, don't forget to bring something for the instant gallery and, if you haven't finished it yet, there is still time to prepare your President's Challenge piece – A Usable Drinking Vessel for you favourite beverage.

See you on Sept 28th at the Sapperton Pensioners Hall starting at 6:30.



President's Challenge:
Lace Bobbins—Bruce Campbell

Andi Wolfe Seminar

Anne Rostvig

I was one of just five lucky people who attended the surface decoration class with Andi Wolfe on June 26th. The day was crammed with information and I'm sure we all came away with a renewed respect for Andi and her extraordinary talent.

We began with a basic wood-burning exercise. We each had a basswood board which we divided into twelve sections front and back. We then filled each square with a different texturing design, reproducing samples from the summer issue of *Woodcarving Illustrated*. We used different tips and occasionally swapped burners to obtain multiple effects. I had never used a woodburner before, so it took a while to get the hang of it, but I was soon having fun.

Having experimented with texturing, the next step was to transfer two copies of a design on to a new piece of basswood, burn the outline and texture parts of the background. The designs were quite challenging – mine was a butterfly set in a frame like a stained glass window. Each picture had to be textured differently, to complement the different colouring methods to be applied. One picture was to be coloured with the Prismacolor alcohol-based markers, the other with acrylic paints.

I found the colouring to be especially interesting. I have worked with acrylics for many years, but learnt some new techniques and enjoyed the iridescent effect obtained with the use of the interference pigments. The markers were new to me and I found them easy to use and creating a quite different effect than the acrylics.

It was a long day, but I think everyone enjoyed it. Andi was infinitely patient with us, encouraging and helpful. Art acted as teaching assistant, distributing advice and abuse in equal amounts! My thanks go to Andi and Art for their time and energy. It was truly a learning experience. If I can achieve something even one-tenth as beautiful as Andi's work I shall consider myself very lucky indeed.



Glory of Autumn No. 2—Andi Wolfe

Tips Tricks and Problems

Kerry Deane-Cloutier

In June we published a problem regarding tung oil bubbling out of holes and marring the finish. Phil Cottell, a member from North Saanich, offers this solution:

I have encountered this too, especially around bark inclusions, fissures, insect holes etc. One thing I try to do is limit the amount of oil that gets into these spots in the first place. If you first put the oil on a kitchen-type paper towel and allow it to disperse into the paper, then wipe oil onto the wood without pressing too much, you should get the oil on the surface where you want it and not in the holes. If the holes are not too numerous, you can also blot the oil that may get into them, using paper towels again, and a dental tool to poke the paper into the holes. Also, if you check on the bowl before the oil dries completely (e.g., within about 8 h of application), you may see shiny evidence of extra oil around the holes, and can wipe/blot it away before it hardens.

RUSS FAIRFIELD DEMO

Anne Rostvig

The 2005/2006 season was launched in great style with an all-day demonstration by Idaho woodturner Russ Fairfield on September 10th. Russ began his working life as a machinist, becoming a pattern-maker and later qualifying as a mechanical engineer. Although he had always been interested in turning, it was in 1983, while he was living in Florida, that he was fired with enthusiasm after a hurricane supplied him with almost unlimited wood on which to practice.

His enjoyment of the craft is obvious in his feel for the wood. His engineering background comes through when he talks about making his own tools and adapting purchased tools to increase their efficiency. The resulting demo was crammed with useful information.

The focus of the demo was turning between centers, something that many of us would rather ignore. Russ proceeded to show us just how many items can be made this way, and how relatively simple the process. He began with the roughing gouge, which he used in quite extraordinary ways, continued with the spindle gouge and various other profiling tools. Most of these tools were home-made from screwdrivers or from rods of cold rolled steel. As he said, why spend \$50 on a tool until you know how much you will use it. He gave lots of hints on sharpening and different techniques for cutting.

Russ demonstrated making a table leg, with the advice to make all four in one day at one session. He went on to turn an 'inside out' Christmas ornament which offered lots of possibilities, then a weed pot and finally his signature natural edge goblet. The weed pot was made from camphor, the smell of which cleaned out all our sinuses! He showed us the use of a candle reamer to drill the hole in the pot so that it can be adapted to take a standard candle, and the use of a piece of dowel to block the hole so that the rest of the piece can be turned.

He also shared with us some of his finishing secrets, including the recipe for his own oil-based finish. He sands to 1200 then rubs the item with a brown paper grocery bag, which is roughly equivalent to 2500 grit. Green turnings are dumped in a bucket of the finish and left for a week, then drained and left to dry for another week before buffing. Dry items are waxed first, then oiled, then waxed again.

Russ is a font of information. He has a casual style of teaching – some of his “Oh, by the way” remarks were real gems of knowledge, and he was generous with his time and his experience. I'm sure everyone who attended left enriched.



CONOVER STEADY

Bruce Campbell

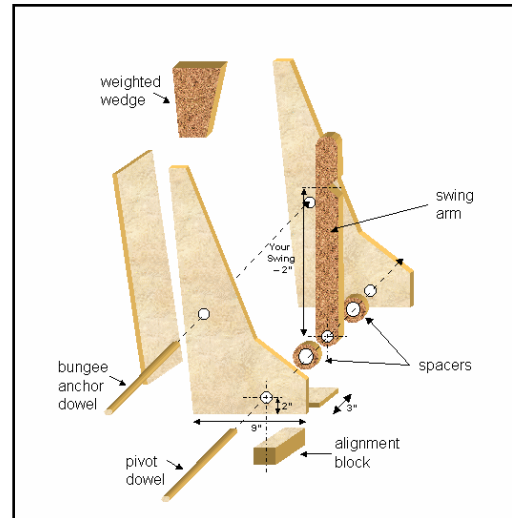
One of the many things that Russ Fairfield shared with us during his recent demonstration was a spindle steady designed by Ernie Conover and appearing in his book titled *The Lathe Book*. The biggest advantage of this steady is that it allows you to turn right through the steady and it immediately self-adjusts to the new diameter.

When using the unit you turn the center of the stock round and then engage the steady by dropping the wedge behind the pivot arm. Friction creates a lot of heat so rub some wax (paraffin or bee's wax) right on the wood at the friction point. This prevents burning.

Russ built his box from $\frac{3}{4}$ " plywood and the swing arm from a 2x4 but he suggests that the arm could be thinner (around 1") and spacers inserted to center it (see diagram). He uses a bungee cord hooked to the upper dowel and stretched over the wedge to give the wedge more "weight". Another approach might be to make the wedge from heavier material (e.g., metal or a box filled with steel shot). Notice that there is no front to the box and the back is open at the bottom (see photo). This is because Russ uses a couple of quick-clamps to hold it on the bed rather than a more cumbersome clamp-block. It also makes it easy to clear shavings from the box.

Russ commented that he made his wedge too shallow so he needed to add spacers to the back of his box. Making a deeper wedge can eliminate them and add more weight. One useful addition would be to attach an alignment block under the box that would fit between the ways. This would ensure the box would always be square to the bed and the pivot point would always be centered.

This is a simple and inexpensive way to solve the vibration problem when turning long simples. Thanks, Ernie Conover, and Russ, for the great idea.



ALL DAY DEMOS—WHY BOTHER?

Bruce Campbell

About 25 people attended the most recent Guest Demonstration event at the Sapperton Hall. Russ Fairfield spent the day showing us lots of interesting tricks and tips and we had a lot of fun. But some of us wondered why were there not more people? Out of a Guild of nearly 100 members and with the Guild paying the shot on this one why such a small crowd? It seems that many of our members have not yet discovered the tremendous value of these presentations. Whether you are just starting out or are a seasoned turner these day-long events are packed with information. Even the lunch break is filled with folks "talkin' turning". If you have questions or ideas these sessions are ideal places to bring them up.

The Guild executive works hard to create a mix of programs for you, the members. There is Focus on Fundamentals, Turning 101, The Show and Ask Circle, the Instant Gallery, monthly speakers, Guest Demonstrators and classes, and more. Of course we have busy lives and cannot attend all these events. But if you are serious about wanting to improve your turning you have everything you need right here. All you need to do is start to take part. I assure you, it will be lots of fun and give you instant results.

MARILYN CAMPBELL DEMO AND CLASSES

Art Liestman

Marilyn Campbell, a professional woodturner from Kincardine, Ontario, will be here on Saturday, November 12th for a demo and on Sunday, November 13th for a hands-on class.

When asked for a brief biographical description, Marilyn responded with the following:

“My interest in turning began in the early eighties and was sparked by a desire to work creatively with wood. At that time my husband and I had just finished building a 36’ sailboat, an endeavor which introduced me to woodworking and also renewed in me an urge for making. Un-schooled in the “wood arts”, I chose the lathe as a starting point because it offered many creative possibilities within the safe confines of certain limits. In the early days, I made items to sell at craft fairs but eventually, with the larger influences of woodturning groups and individual artists, my focus changed to exploring the boundaries of those limits.”

“The boatbuilding venture also resulted in my familiarity with epoxy and subsequent recognition of its potential as another medium. I began by using epoxy as a simple, decorative element but gradually it evolved into a structural, yet expressive, component within my pieces. Consequently, for several years now, I have been exploring the variety of forms and effects that are made possible by the combination of the two materials - each adds its voice while subtly complementing the other.”

Suffice it to say that Marilyn is one of the most creative people working in the woodturning community. Her pieces are turned, cut apart, and recombined with epoxy components. The pictures here will give you some idea of what she does.

Marilyn has demonstrated at national symposiums and at many local clubs. Her work is in the most prestigious galleries and collections. She was recently selected to participate in 2006 International Turning Exchange at The Woodturning Centre in Philadelphia. For more information on Marilyn, please see her website at <http://www.marilyncampbell.ca>.



On Saturday, November 12th, her demo will be held at the Sapperton Pensioners Hall from 9:30 am to approximately 4pm. There is a \$25 charge to attend the demo.

Marilyn will teach a hands-on class on Sunday, November 13th at Island Woodcraft in Coquitlam from 9:30 am to approximately 4pm. (Please show up around 9 am so that the class can begin promptly at 9:30.) The class fee is \$150. Please contact Art Liestman (artliestman@shaw.ca or 604-939-3843) to be put on the class list.

INSTANT GALLERY



Vessel, Walnut, 3" x 4"
Doug Schop



Vase, Acacia
Larry Stevenson



Lincoln, Maple & Ibiraro, 11" x 20"
Marco Berera



Inlaid Bowl, Maple & Fluorite, 8" x 1"
Kerry Deane-Cloutier

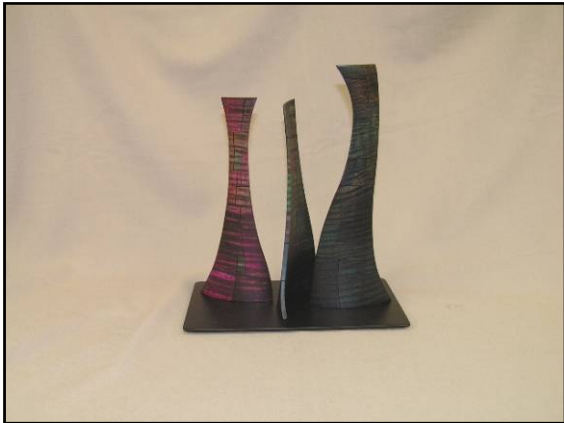


Hollow Form, Spalted Maple, 5" x 4"
Keith Hudson



Hinged Ring Box, Maple, 2 1/4" x 3 1/4"
Alan Cusworth

INSTANT GALLERY (cont.)



Dancing Trio, Maple, 9"
Art Liestman



Flower Vases, Purpleheart & Canarywood, 5"
Mitchell Visser



Bowl, Figured Maple & Pink Coral 5"x 2"
David Wagner



Bark Edge Bowl, Red Alder, 8"x 5"
Neno Catania

PRESIDENT'S CHALLENGE—THAT CRACKS ME UP!



Vase, Apple
Colin Delory



O-S Series Platter, Maple, 13"x 2"
Bruce Hodgson

PRESIDENT'S CHALLENGE—THAT CRACKS ME UP! (cont.)



Margarita Glass, Maple
Jay Mapson



John Bese Bowl Blank, Maple
Finished by Lorne Nelson



Goblet, Holly
Don Hoskins



Crack Pot Flower Pot, Bing Cherry
10"x 7" Merv Graham



Bowl, Maple, 18"
Rich Schmid



Bowl, Cedar 26" x 16"
Steve Hansen

CLASSIFIEDS: FOR SALE

Delta DL-40 wood lathe. 1 ¼ HP variable speed DC motor, 53" bed, 16" between centers, 24" diameter outboard. Two inboard banjos and one outboard banjo. This lathe has had the cabinet severely modified to provide a very stable lathe with minimum vibration. Cabinet with drawers and cupboard between headstock and tailstock for all your accessories. There is an extra DC speed controller power box and an extra operator control box with digital speed readout. This is a must see unit. \$2500 OBO Ask me about it at a meeting. Larry Stevenson 604-438-3947

NOTICES:

CLOVERDALE WOODWORKING SHOW:

Put an extra good finish on your best pieces and enter them in the competition at the Cloverdale Woodworking Machinery, Tool Show & Sale from October 21 - 23. The GVWG is presenting our 6th annual West Coast Woodturning Competition. There's a category for every turner and huge cash and merchandise prizes. Members who volunteer to man the competition booth or demonstrate some turning techniques get free admission to the show in Cloverdale. See Jay Mapson (604-723-8692, westcoastcompetition@shaw.ca) for further details.

LAGUNA BANDSAW EVENT:

Don't forget to attend the September meeting to get your last chance to obtain tickets in the "Laguna Bandsaw Event." The draw will be at the meeting so be sure to attend. If you cannot be there but still want tickets, contact Jay Mapson at (604-723-8692, westcoastcompetition@shaw.ca).

JACK DEVOS DEMO:

Jack Devos from Australia will be doing an all day demo for the Fraser Valley Woodturners Guild at KMS Tools in Abbotsford on Saturday, October 15th from 10 AM – 4 PM. The cost is \$25.00 per person and everyone is welcome. Check out his work at <http://jackdevos.com/>. There will also be two hands-on Classes at KMS Tools in Coquitlam from 10 AM – 4 PM on October 14th (Friday) and October 17th (Monday). The cost is \$150.00 per person per course, with a maximum of 5 persons per class. To register phone Ian Fulford at (604) 853-5598.

GVWG Officers, Appointees and Volunteers

PRESIDENT

Bruce Campbell 604-944-3028

VICE PRESIDENT

Steve Hansen 604-585-0638

SECRETARY

Larry Stevenson 604-438-3947

TREASURER

Merv Graham 604-272-3525

MEMBERS AT LARGE

Fred Baldwin 604-531-9395

Colin Delory 604-576-1172

Andrew Forrest 604-990-9667

John Weir 604-524-5831

Gerry Vickers 604-463-0760

Jay Mapson 604-723-8692

Marco Berera 604-274-7594

David Wagner 604-983-3852

LIBRARY ACQUISITIONS ADVISOR

Don Hoskins 604-939-6808

EDUCATIONAL COORDINATOR

Marco Berera 604-274-7594

LIBRARIANS

Michelle Jacobs 604-581-7097

Russ Selwood 604-224-4126

WOOD EXCHANGER

Steve Kent 604-937-0145

FOOD CHIEF

TBA

FOF COORDINATOR

Lorne Nelson 604-596-9848

NEWSLETTER

Dennis Cloutier & 604-468-0605

Kerry Deane-Cloutier

gvwg@runningdogwoodworking.com

DIGITAL PHOTOGRAPHY

Gregg Parsons 604-542-9066

WEBMASTER

Steve Fairbairn

sgfmail@shaw.ca